

Division of Epidemiology & Public Health Preparedness (EPHP) 775-328-2447

Adam Vazquez, MPH, COVID-19 Epidemiologist AVazquez@nnph.org

Lissa Callahan, COVID-19 Statistician LCallahan@nnph.org

**Weekly Summary\***

Metrics	MMWR Week 44	MMWR Week 45	MMWR Week 46	MMWR Week 47	MMWR Week 48
<b>Number of New Cases</b>	207	233	209	151	165
<b>New Cases per 100,000 Population</b>	42	47	42	30	33
<b>Hospitalizations**</b>	19	23	19	17	22
<b>Deaths**</b>	2	1	0	2	3

\*For definition and specifics on metrics summarized, please refer to corresponding sections.

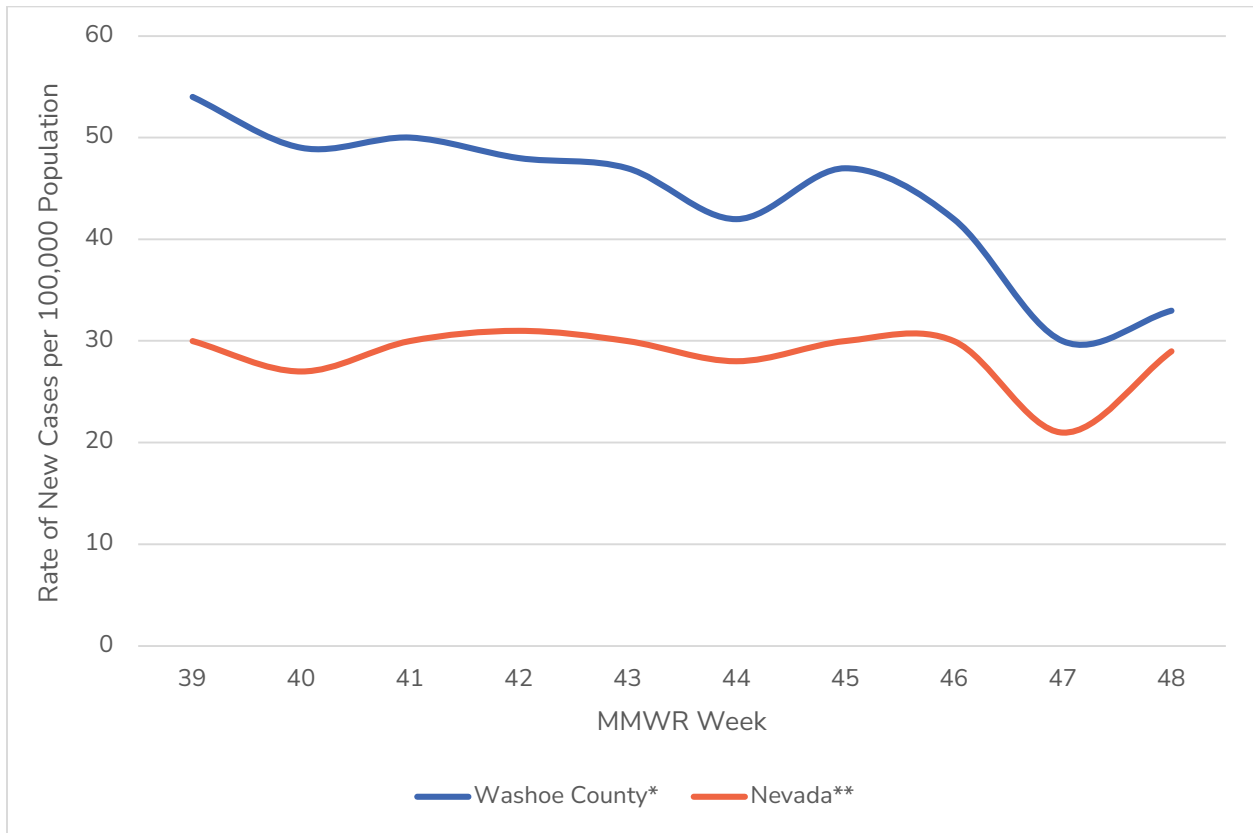
\*\*Note: hospitalization and death totals for each week are subject to change as new reports are received on a daily basis and are often delayed, causing underreporting in more recent MMWR weeks.

**Key Message(s)**

- The number of cases reported in Washoe County decreased from 42 new cases per 100,000 population in MMWR week 44 to 33 new cases per 100,000 population in MMWR week 48.

## COVID-19 Case Information

**Figure 1. Rate of New Cases Reported by MMWR Week, Washoe County and Nevada, 2023**

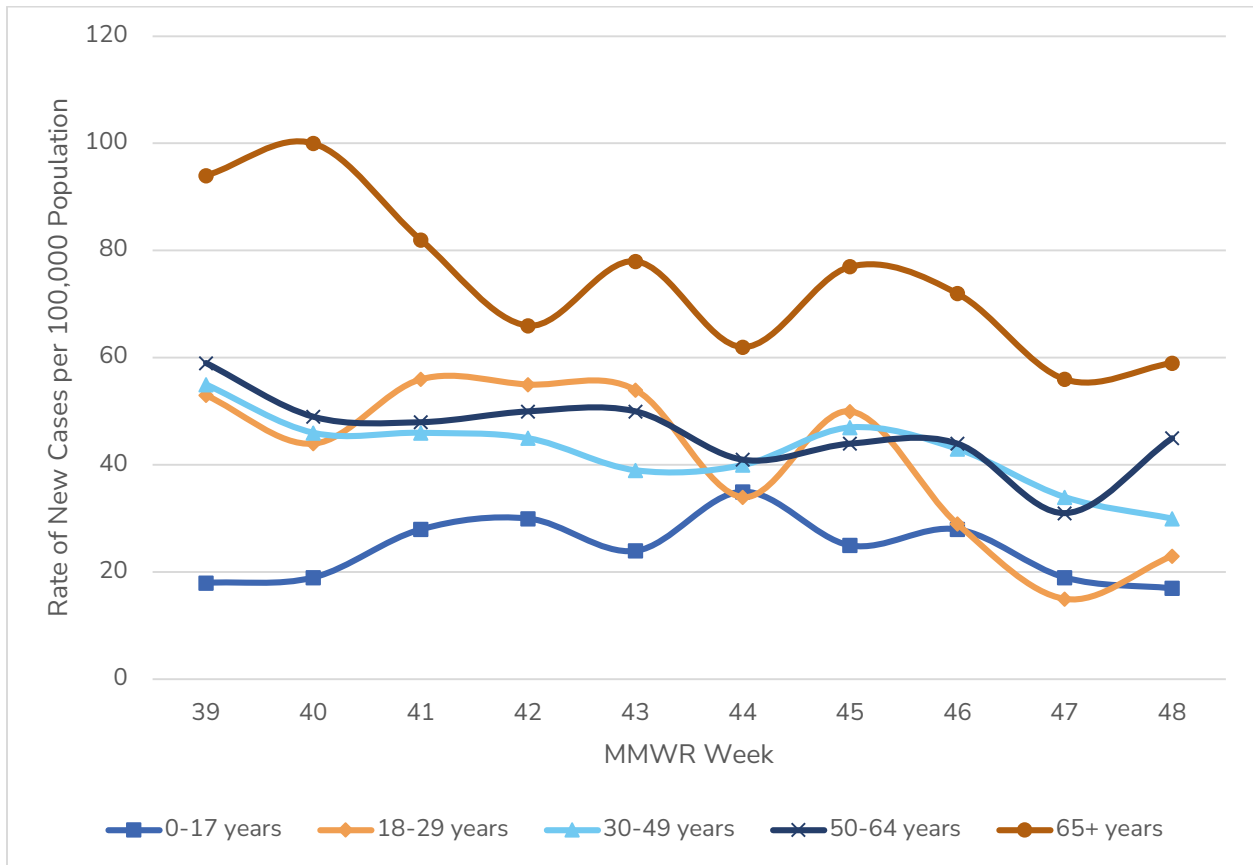


\*Data source: Internal, NNPH

\*\*Data Source: <https://nvhealthresponse.nv.gov/#covid-data-tracker>

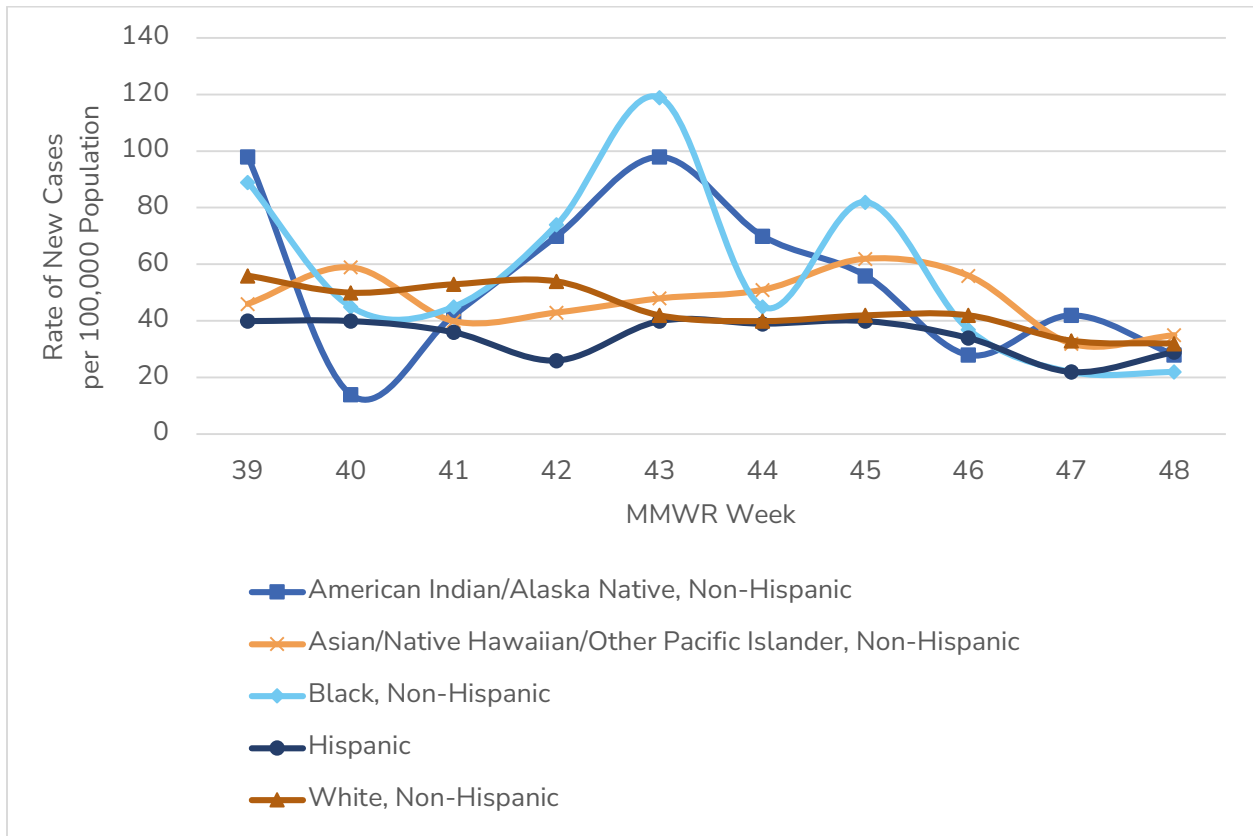
- In Washoe County, case counts decreased from a ten-week high of 54 new cases per 100,000 population in MMWR week 39 to 30 new cases per 100,000 population in MMWR week 47, then increased to 33 new cases per 100,000 population in MMWR week 48.
- In Nevada, case counts plateaued in the high 20s and low 30s in MMWR week 39 through MMWR week 46. Case counts decreased to 21 new cases per 100,000 population in MMWR week 47 and then increased to 29 new cases per 100,000 population in MMWR week 48.

**Figure 2. Rate of New Cases Reported by Age Group and MMWR Week, Washoe County, 2023**



- For MMWR week 39 through MMWR week 48, the 65+ age group consistently had the highest case rate.
- For MMWR week 44 through MMWR week 48, the age group with the lowest case rate fluctuated. By MMWR week 48, the 0-17 age group had the lowest case rate.

**Figure 3. Rate of New Cases Reported by Race/Ethnicity\* and MMWR Week, Washoe County, 2023**



\*Note: From MMWR week 39 to MMWR week 48, 3.9% of cases were recorded as “Declined to answer”, “Multiple”, “Other”, or “Unknown” and rates per 100,000 population are unable to be calculated for those categories.

- In MMWR week 48, those who identified as Asian/Native Hawaiian/Other Pacific Islander, Non-Hispanic had the highest rate of new cases with 35 new cases per 100,000 population.
- In MMWR week 48, those who identified as Black, Non-Hispanic had the lowest rate of new cases per 100,000 population with 22 new cases per 100,000 population.

## Hospitalizations, ICU Status, & Deaths

COVID-19 hospitalizations are defined as those hospitalized for greater than or equal to 24 hours and have a positive SARS-CoV-2 laboratory test.

As of July 1, 2023, COVID-19-associated deaths include cases investigated for a confirmed SARS-CoV-2 infection and determined that COVID-19 was the cause of death or COVID-19 contributed to the cause of death and/or is specified on the death certificate as a cause of death. See current and previous full definitions in Glossary/Key Terms at the end of the report.

**Table 1. Number and Percent of New Cases Reported by Age and Hospitalization Status, MMWR Weeks\* 44 through 48, Washoe County, 2023**

			Age Group				
			0-17	18-29	30-49	50-64	65+
MMWR Week	44	Total Cases	38	30	51	37	51
		% Hospitalized	5.3%	0.0%	0.0%	10.8%	25.5%
	45	Total Cases	27	44	59	40	63
		% Hospitalized	3.7%	2.3%	6.8%	10.0%	20.6%
	46	Total Cases	30	26	54	40	59
		% Hospitalized	3.3%	3.8%	1.9%	12.5%	18.6%
	47	Total Cases	21	13	43	28	46
		% Hospitalized	4.8%	0.0%	2.3%	14.3%	23.9%
	48	Total Cases	18	20	38	41	48
		% Hospitalized	5.6%	0.0%	13.2%	7.3%	27.1%

\*Note: hospitalization totals for each week are subject to change as new reports are received on a daily basis and are often delayed, causing underreporting in more recent MMWR weeks.

- During MMWR weeks 44 through 48 the age group with the highest percentage of total cases resulting in hospitalization was the 65+ age group, with a high of 27.1% of cases hospitalized in MMWR week 48.

**Table 2. Number and Percentage of Cases Reported by Hospitalization and ICU Status by MMWR Week\*, Washoe County, 2023**

MMWR Week	New Cases	Hospitalized		ICU	
		#	%	#	%
39	266	17	6.4	0	0.0
40	244	27	11.1	4	1.6
41	248	26	10.5	2	0.8
42	237	17	7.2	1	0.4
43	232	22	9.5	5	2.2
44	207	19	9.2	1	0.5
45	233	23	9.9	2	0.9
46	209	19	9.1	1	0.5
47	151	17	11.3	1	0.7
48	165	22	13.3	2	1.2

\*Note: hospitalization and ICU totals for each week are subject to change as new reports are received on a daily basis and are often delayed, causing underreporting in more recent MMWR weeks.

**Table 3. COVID-19 Deaths by Age Group and Time Period\* of Death, Washoe County, 2020-2023**

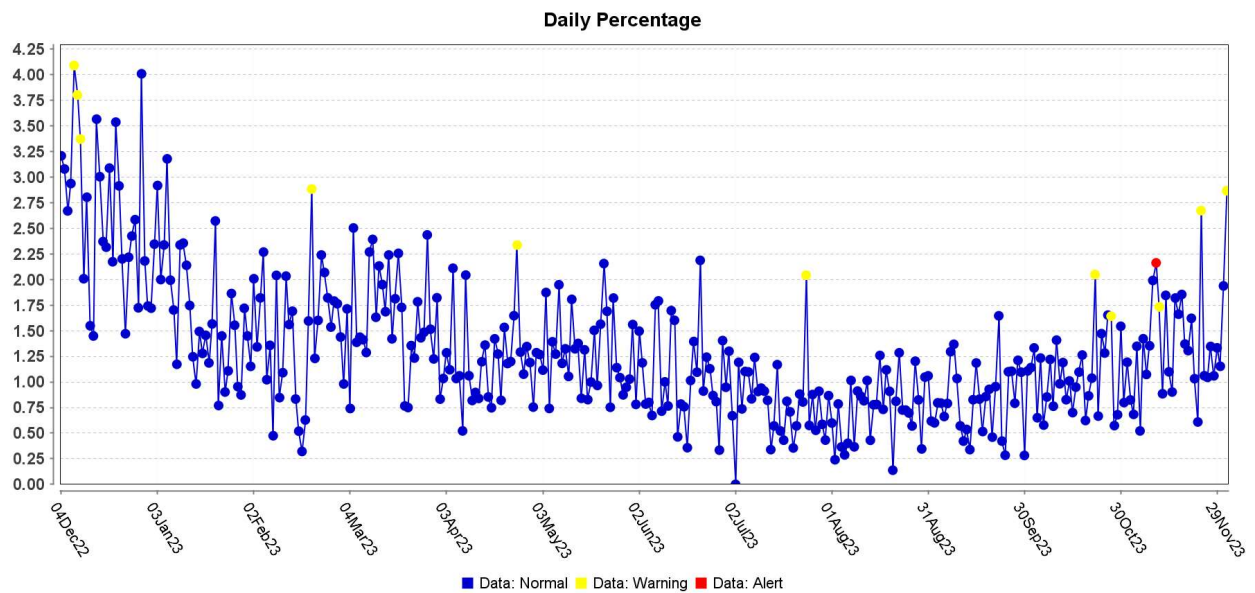
<b>Time Period</b>	<b>Total Deaths</b>	<b>0-17 years</b>	<b>18-29 years</b>	<b>30-49 years</b>	<b>50-64 years</b>	<b>65+ years</b>
<b>2020 March - December</b>	510	1	2	31	86	390
<b>2021 Total</b>	566	2	6	61	128	369
<b>2022 Total</b>	266	0	2	14	37	213
<b>2023 January</b>	6	0	0	0	1	5
<b>2023 February</b>	8	0	0	0	2	6
<b>2023 March</b>	8	0	0	0	0	8
<b>2023 April</b>	5	0	0	0	0	5
<b>2023 May</b>	2	0	0	0	0	2
<b>2023 June</b>	2	0	0	0	0	2
<b>2023 July</b>	0	0	0	0	0	0
<b>2023 August</b>	4	0	0	0	0	4
<b>2023 September</b>	10	0	0	3	0	7
<b>2023 October</b>	6	0	0	1	0	5
<b>2023 November</b>	8	0	0	0	1	7

\*Note: death totals are subject to change as new reports are received on a daily basis and are often delayed, causing underreporting in more recent months.

## Surveillance Data

The percentage of persons indicating COVID-19 as the reason for visit to the Emergency Room (ER) is presented in Figure 4. The overlay below depicts COVID-19 in blue. Alerts appear as yellow and/or red dots. They indicate an unusually high percentage of COVID-19 visits according to ESSENCE algorithms.

**Figure 4. Percentage of ER Visits Due to COVID in the Last Year, Washoe County**



Data source: ESSENCE



## Glossary/Key Terms

### Data

Unless otherwise noted, data in this report are based on symptom onset date (when available or applicable), otherwise sample collection date is used. The Nevada State Demographer's data were used for population and demographics for Washoe County throughout this report.

### COVID-19 Case

Coronavirus Disease 2019 (COVID-19) cases counted in this document are confirmed or probable cases as determined by meeting confirmatory laboratory evidence, clinical criteria, and/or epidemiologic linkage as defined on the CDC website here:

<https://ndc.services.cdc.gov/case-definitions/coronavirus-disease-2019-2021/>

### COVID-19 Hospitalization

COVID-19 hospitalizations are counted as those hospitalized for greater than or equal to 24 hours and have a positive SARS-CoV-2 laboratory test.

As of October 2022, this includes any patient with a positive result on a SARS-CoV-2 laboratory test collected from 14 days before through three days after hospital admission.

- (<https://preparedness.cste.org/wp-content/uploads/2022/10/Interim-CSTE-Guidance-for-COVID-Hospitalization.pdf>)

### COVID-19 Death

As of January 1, 2022, both Confirmed and Probable COVID-19-associated deaths are included in the count.

- ([https://cdn.ymaws.com/www.cste.org/resource/resmgr/pdfs/pdfs2/20211222\\_interim-guidance.pdf](https://cdn.ymaws.com/www.cste.org/resource/resmgr/pdfs/pdfs2/20211222_interim-guidance.pdf))

Criteria for confirmed case death:

- The case meets the confirmed COVID-19 surveillance case definition, AND at least ONE of the following criteria is met:
- A case investigation determined that COVID-19 was the cause of death or contributed to the death.
- The death certificate indicates COVID-19 or an equivalent term as one of the causes of death, regardless of the time elapsed since specimen collection of the confirmatory laboratory test used to define the case.
- The death occurred within (and including) 30 days of specimen collection for the confirmatory laboratory test used to define the case and was due to natural causes (e.g., the Manner of Death is coded as "natural" on the death certificate.)

Criteria for probable case death:

- The case meets the probable COVID-19 case definition AND a case investigation determined that COVID-19 was the cause of death or contributed to the death; **OR**
- The case meets the probable COVID-19 surveillance case definition based on presumptive laboratory evidence AND death occurred within (and including) 30 days of specimen collection and was due to natural causes (e.g., the Manner of Death is coded as “natural” on the death certificate.); **OR**
- The case meets the probable COVID-19 surveillance case definition based on epidemiologic linkage and meeting clinical criteria, AND death occurred within (and including) 30 days of symptom onset and was due to natural causes (e.g., the Manner of Death is coded as “natural” on the death certificate.); **OR**
- The case meets the probable COVID-19 surveillance case definition based only on vital records criteria (i.e., a death certificate that lists COVID-19 disease or SARS-CoV-2 or an equivalent term as an underlying cause of death or a significant condition contributing to death and there is no confirmatory or presumptive laboratory evidence.)

As of July 1, 2023, in alignment with the CSTE laboratory criteria used to classify cases, COVID-19-associated deaths include:

- A case investigation for a confirmed SARS-CoV-2 infection determined that COVID-19 was the cause of death or contributed to the cause of death; **AND/OR**
- The death certificate lists a specific COVID-19 ICD code.

The previously used confirmed, probable, and suspected death classifications are discontinued.

## Links

### **NNPH COVID Dashboard**

<https://washoe.maps.arcgis.com/apps/dashboards/0db36fa8fa9c47758bc38210e4c23818>

### **NNPH website for COVID information and vaccine appointments**

<https://covid19washoe.com/>

### **CDC COVID Data Tracker** <https://covid.cdc.gov/covid-data-tracker/>

### **Department of Health and Human Services Nevada Division of Public and Behavioral Health (DPBH) Technical Bulletins** [https://dphh.nv.gov/Resources/Technical\\_Bulletins-New/](https://dphh.nv.gov/Resources/Technical_Bulletins-New/)

### **NNPH COVID-19 Surveillance Report 2020-2022** <https://www.nnph.org/programs-and-services/ephp/statistics-surveillance-reports/index.php>

### **NNPH COVID reports** <https://covid19washoe.com/daily-updates/washoe-county-covid-19-data-report/>